

Power blender/shaker TP ENGINEERING type FE FS
Code No.: RUB069.2.9



Technical Data		
Producer	TP ENGINEERING	
Type	755 FE FS	
Gross capacity	9	Ltr
Working capacity	3-4	Ltr
Size of product container:		
Diameter	175	mm
Deep	375	mm
Diameter of conical diffuser	90	mm
Blender speed		
Cycle time	0-60	min
Overall dimentions	760 x 760 x1300 high	mm

Description:

TP ENGINEERING type 755 FE FS small scale powder blender/shaker.

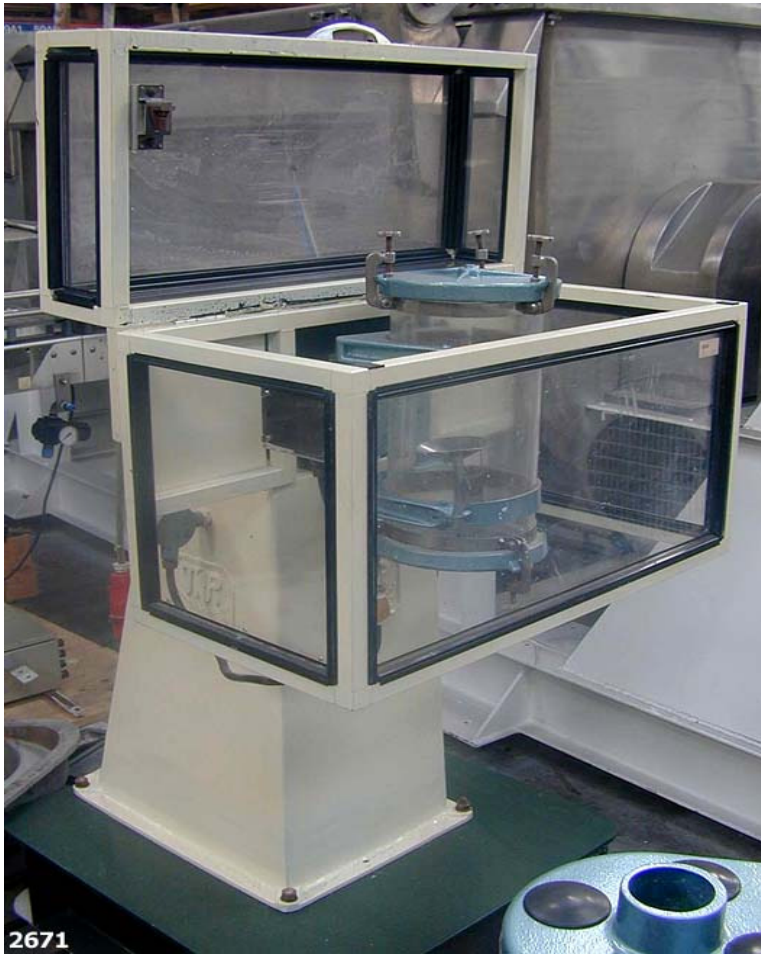
Product container 175mm dia x 375mm deep, gross capacity 9 litres, approx working capacity 3 - 4 litres. 90mm dia conical diffuser/baffle plate fitted.

Safety guarding enclosure with interlocked access hatch. Electrical stop/start 415v and 0 - 60min cycle timer. Painted steel support pedestal mounted onto a plinth base.

Overall dimensions 760 x 760 x 1300mm high.



Power blender/shaker TP ENGINEERING type FE FS



Power blender/shaker TP ENGINEERING type FE FS